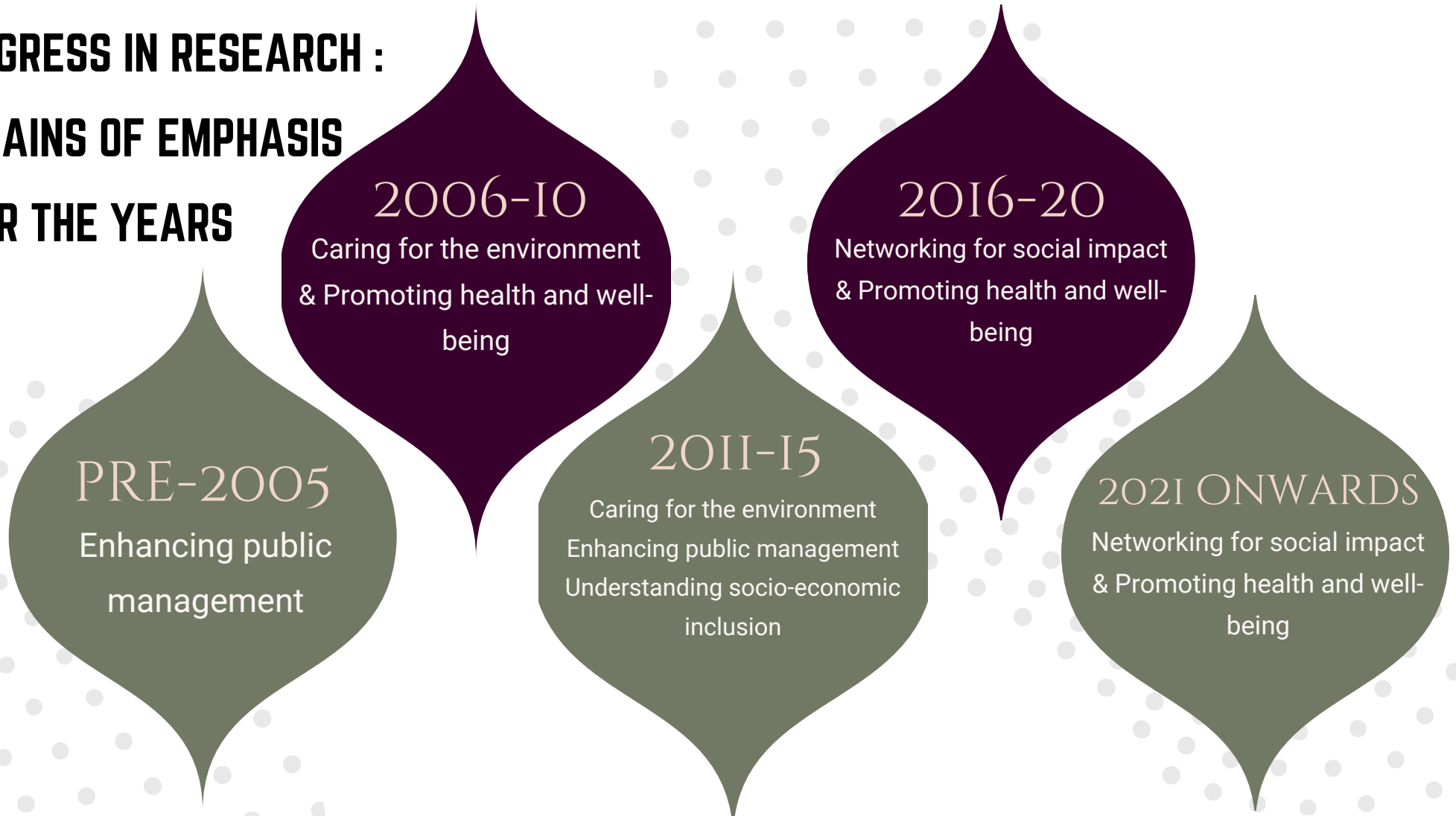


Satish Krishnan (Indian Institute of Management Kozhikode, India)  
 Eduardo Henrique Diniz (Fundação Getulio Vargas, Brazil)  
 Antonio Díaz Andrade (University of Agder, Norway)  
 Sundeep Sahay (University of Oslo, Norway)

## SOCIETAL IMPLICATIONS OF ICTs

This curation examines the societal opportunities and challenges that emerge from the integration of information and communication technologies. It focuses on 71 articles published in MIS Quarterly and serves as a reference and platform for future research on the societal impact of this continuously evolving technological landscape.

### PROGRESS IN RESEARCH : DOMAINS OF EMPHASIS OVER THE YEARS



### THEMES

#### ENHANCING PUBLIC MANAGEMENT

Delves into e-governance and e-politics platforms as well as IS implications for dealing with corruption and ability to provide government response to crisis.

#### NETWORKING FOR SOCIAL IMPACT

Highlights how social media platforms offer opportunities for users to coordinate and participate in social endeavors aiming to generate social impact and emphasizes the negative impacts of these networks.

#### DEVELOPING UNDERSERVED COMMUNITIES

Delves into the potential of IS to address poverty and enhance connectivity to enable the advancement of rural communities.

#### UNDERSTANDING SOCIO-ECONOMIC INCLUSION

Examines how IS offers avenues for socio-economic empowerment and renders benefits directed towards public welfare. Highlights negative implications such as hate crimes including their threat to safety in society.

#### PROMOTING HEALTH AND WELL-BEING

Delves into the potential of IS to facilitate improvement in physical and mental health, as well as enhanced governance and coordination of health care activities.

#### CARING FOR THE ENVIRONMENT

Explores the potential of IS in addressing sustainability challenges by fostering the advancement of technologies to promote societal and environmental resilience.

